

# Guias Lineares e Patins

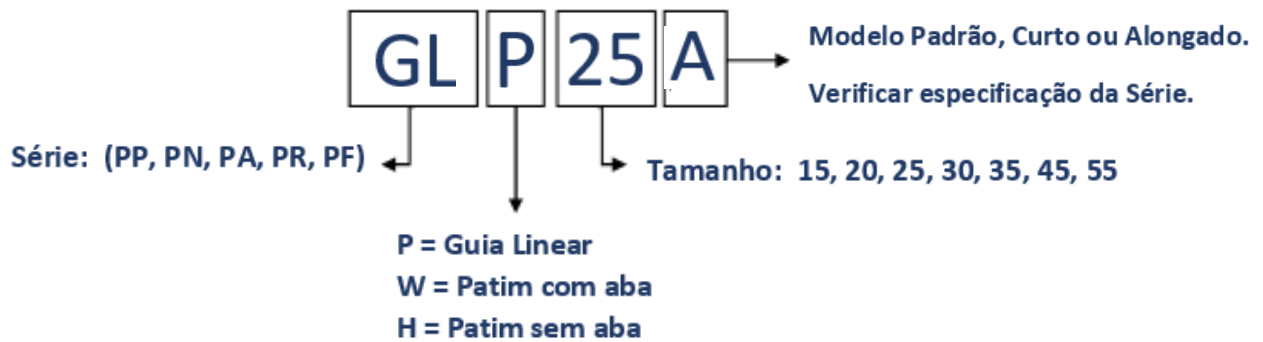
## Índice

1. Índice.....	1
2. Guias Lineares   Especificações.....	2
3. Série: PPH, PNH, PAH .....	3
3.1 Série: PPW, PNW, PAW.....	4
4. Série: PRH.....	5
4.1 Série: PRW.....	6
5. Série Mini: PMH.....	7

## Guias Lineares e Patins

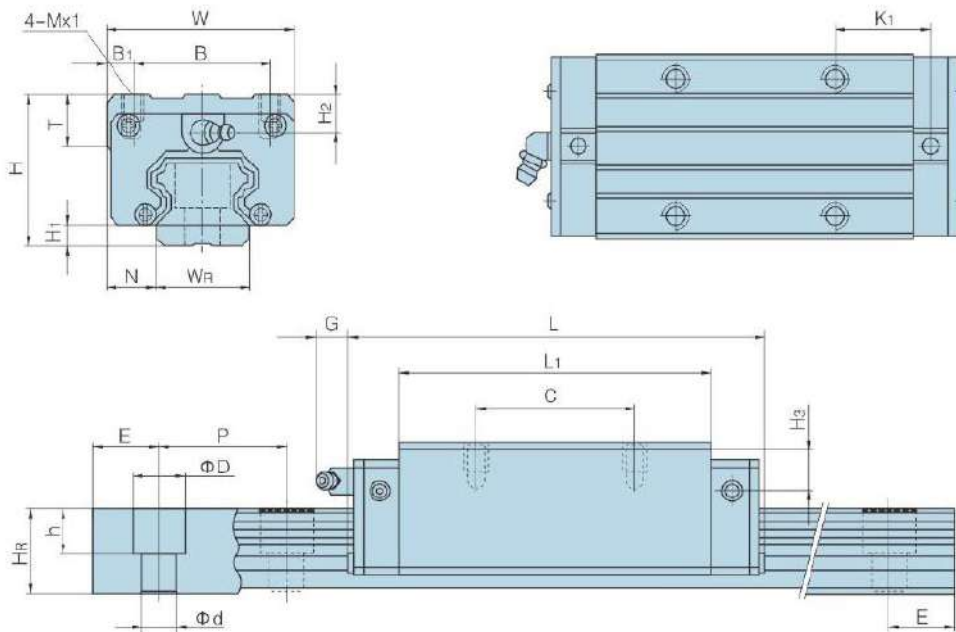


### Códigos (exceto série miniatura PMH)



Série	Especificação	Intercambialidade
GLP / PP	Padrão	Séries PP, PN e PA
GLC / PN	Anti-oxidação (Guia de Cromo e Patins de Níquel)	Séries PP, PN e PA
PA	Alta Resistência (Patins com gaiola de aço)	Séries PP, PN e PA
GLR / PR	Baixo Perfil	Apenas PR
GF / PF	Maior proteção e redução de atrito (Guia com fita de proteção ao invés de tampinhas)	Apenas GF
GLM / PMH	Miniatura	Apenas miniatura

**PATIM SEM ABA (PPH, PNH, PAH)**



	H	H <sub>1</sub>	N	W	B	B <sub>1</sub>	C	L <sub>1</sub>	L	K <sub>1</sub>	G	Mx1	T <sub>2</sub>	H <sub>2</sub>	H <sub>3</sub>	W <sub>R</sub>	H <sub>R</sub>	D	h	d	P	E	(mm)	Kgf C	Kgf CO
PPH15	28	4.3	9.5	34	26	4	26	39.4	61.4	10	5.3	M4 x 5	6	7.95	7.7	15	15	7.5	5.3	4.5	60	20	M4 x 16	1138	1697
PPH20	30	4.6	12	44	32	6	36	50.5	77.5	12.25	12	M5 x 6	8	6	7	20	17.5	9.5	8.5	6	60	20	M5 x 16	1775	2776
PPH20A	30	4.6	12	44	32	6	50	65.2	92.2	12.6	12	M5 x 6	8	6	7	20	17.5	9.5	8.5	6	60	20	M5 x 16	2118	3590
PPH25	40	5.5	12.5	48	35	6.5	35	58	84	16.8	12	M6 x 8	8	10	13	23	22	11	9	7	60	20	M6 x 20	2648	3649
PPH25A	40	5.5	12.5	48	35	6.5	50	78.6	104.6	19.6	12	M6 x 8	8	10	13	23	22	11	9	7	60	20	M6 x 20	3275	4944
PPH30	45	6	16	60	40	10	40	70	97.4	20.25	12	M8 x 10	8.5	9.5	13.8	28	26	14	12	9	80	20	M8 x 25	3874	5219
PPH30A	45	6	16	60	40	10	60	93	120.4	21.75	12	M8 x 10	8.5	9.5	13.8	28	26	14	12	9	80	20	M8 x 25	4727	6916
PPH35	55	7.5	18	70	50	10	50	80	112.4	20.6	12	M8 x 12	10.2	16	19.6	34	29	14	12	9	80	20	M8 x 25	4952	6916
PPH35A	55	7.5	18	70	50	10	72	105.8	138.2	22.5	12	M8 x 12	10.2	16	19.6	34	29	14	12	9	80	20	M8 x 25	6021	9163
PPH45	70	9.5	20.5	86	60	13	60	97	139.4	23	12.9	M10 x 17	16	18.5	30.5	45	38	20	17	14	105	22.5	M12 x 35	7757	10271
PPH45A	70	9.5	20.5	86	60	13	80	128.8	171.2	28.9	12.9	M10 x 17	16	18.5	30.5	45	38	20	17	14	105	22.5	M12 x 35	9454	13646
PPH55	80	13	23.5	100	75	12.5	75	117.7	166.7	27.35	12.9	M12 x 18	17.5	22	29	53	44	23	20	16	120	30	M14 x 45	11444	14833
PPH55A	80	13	23.5	100	75	12.5	95	155.8	204.8	36.4	12.9	M12 x 18	17.5	22	29	53	44	23	20	16	120	30	M14 x 45	13935	19620

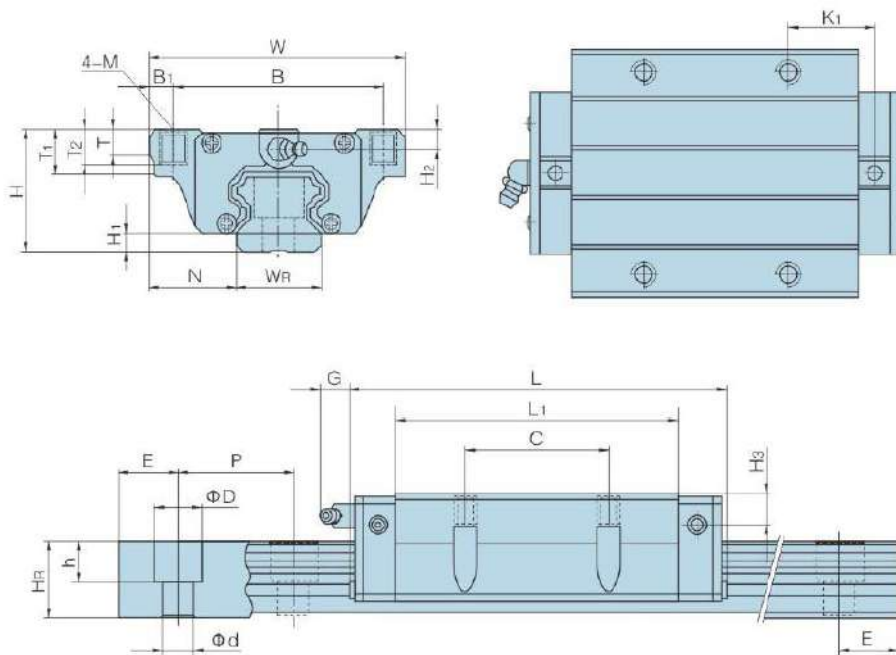
(mm): Parafuso Trilho

Kgf C: Capacidade Carga Dinâmica

Kgf CO: Capacidade Carga Estática

PPH..A: Alongado

**PATIM COM ABA (PPW, PNW, PAW)**



	H	H1	N	W	B	B1	C	L1	L	K1	G	M	T	T1	T2	H2	H3	WR	HR	D	h	d	P	E	(mm)	Kgf C	Kgf CO
PPW15	24	4.3	16	47	38	4.5	30	39.4	61.4	8	5.3	M5	6	8.9	6.95	3.95	3.7	15	15	7.5	5.3	4.5	60	20	M4x16	1138	1697
PPW20	30	4.6	21.5	63	53	5	40	50.5	77.5	10.25	12	M6	8	10	9.5	6	7	20	17.5	9.5	8.5	6	60	20	M5x16	1775	2776
PPW20A	30	4.6	21.5	63	53	5	40	65.2	92.2	17.6	12	M6	8	10	9.5	6	7	20	17.5	9.5	8.5	6	60	20	M5x16	2118	3590
PPW25	36	5.5	23.5	70	57	6.5	45	58	84	11.8	12	M8	8	14	10	6	9	23	22	11	9	7	60	20	M6x20	2678	3649
PPW25A	36	5.5	23.5	70	57	6.5	45	78.6	104.6	22.1	12	M8	8	14	10	6	9	23	22	11	9	7	60	20	M6x20	3275	4944
PPW30	42	6	31	90	72	9	52	70	97.4	14.25	12	M10	8.5	16	10	6.5	10.8	28	26	14	12	9	80	20	M8x25	3874	5219
PPW30A	42	6	31	90	72	9	52	93	120.4	25.75	12	M10	8.5	16	10	6.5	10.8	28	26	14	12	9	80	20	M8x25	4727	6916
PPW35	48	7.5	33	100	82	9	62	80	112.4	14.6	12	M10	10.1	18	13	9	12.6	34	29	14	12	9	80	20	M8x25	4952	6916
PPW35A	48	7.5	33	100	82	9	62	105.8	138.2	27.5	12	M10	10.1	18	13	9	12.6	34	29	14	12	9	80	20	M8x25	6021	9163
PPW45	60	9.5	37.5	120	100	10	80	97	139.4	13	12.9	M12	15.1	22	15	8.5	20.5	45	38	20	17	14	105	22.5	M12x35	7757	10271
PPW45A	60	9.5	37.5	120	100	10	80	128.8	171.2	28.9	12.9	M12	15.1	22	15	8.5	20.5	45	38	20	17	14	105	22.5	M12x35	9454	13643
PPW55	70	13	43.5	140	116	12	95	117.7	166.7	17.35	12.9	M14	17.5	26.5	17	12	19	53	44	23	20	16	120	30	M14x45	11444	14833
PPW55A	70	13	43.5	140	116	12	95	158.8	204.8	36.4	12.9	M14	17.5	26.5	17	12	19	53	44	23	20	16	120	30	M14x45	13935	19620

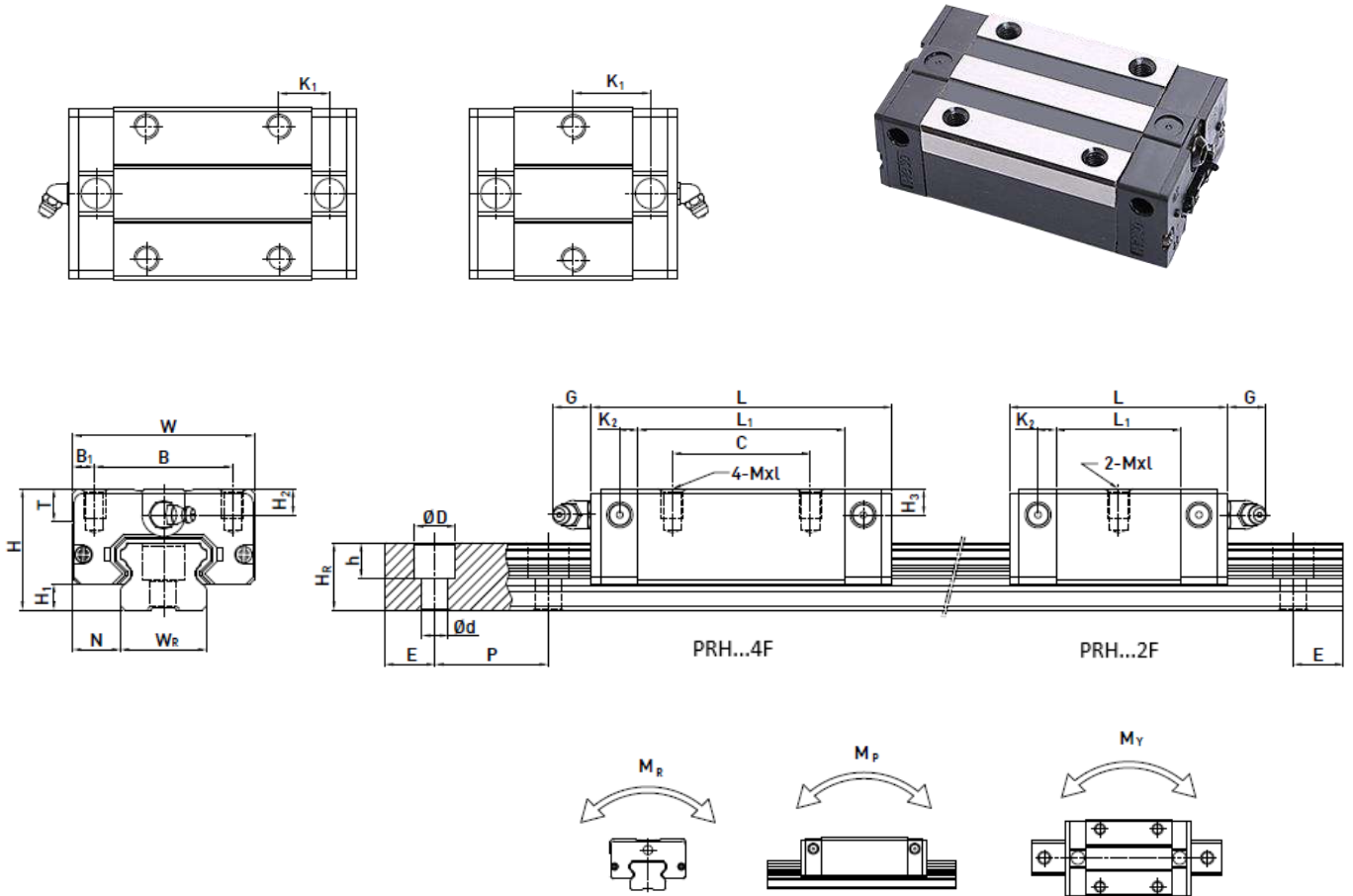
(mm): Parafuso Trilho

Kgf C: Capacidade Carga Dinâmica

Kgf CO: Capacidade Carga Estática

PPW..A: Alongado

## PATIM SEM ABA – PERFIL BAIXO (PRH)



	H	H <sub>1</sub>	N	W	B	B <sub>1</sub>	C	L <sub>1</sub>	L	K <sub>1</sub>	K <sub>2</sub>	G	Mxl	T	H <sub>2</sub>	H <sub>3</sub>	WR	HR	D	h	d	P	E	(mm)	Kgf C	Kgf CO
PRH15..2F	24	4.5	9.5	34	26	4	-	23.1	40.1	14.8	3.5	5.7	M4x6	6	5.5	6	15	12.5	6	4.5	3.5	60	20	M3x16	535	940
PRH15..4F								26	39.8	56.8	10.15														783	1619
PRH20..2F	28	6	11	42	32	5	-	29	50	18.75	4.15	12	M5x7	7.5	6	6	20	15.5	9.5	8.5	6	60	20	M5x16	723	1274
PRH20..4F								32	48.1	69.1	12.3														1031	2113
PRH25..2F	33	7	12.5	48	35	6.5	-	35.5	59.1	21.9	4.55	12	M6x9	8	8	8	23	18	11	9	7	60	20	M6x20	1140	1950
PRH25..4F								35	59	82.6	16.15														1627	3240
PRH30..2F	42	10	16	60	40	10	-	41.5	69.5	26.75	6	12	M8x12	9	8	9	28	23	11	9	7	80	20	M6x25	1642	2810
PRH30..4F								40	70.1	98.1	21.05														2370	4746
PRH35..2F	48	11	18	70	50	10	-	45	75	28.5	7	12	M8x12	10	8.5	8.5	34	27.5	14	12	9	80	20	M8x25	2266	3738
PRH35..4F								50	78	108	20														3335	6484

(mm): Parafuso Trilho

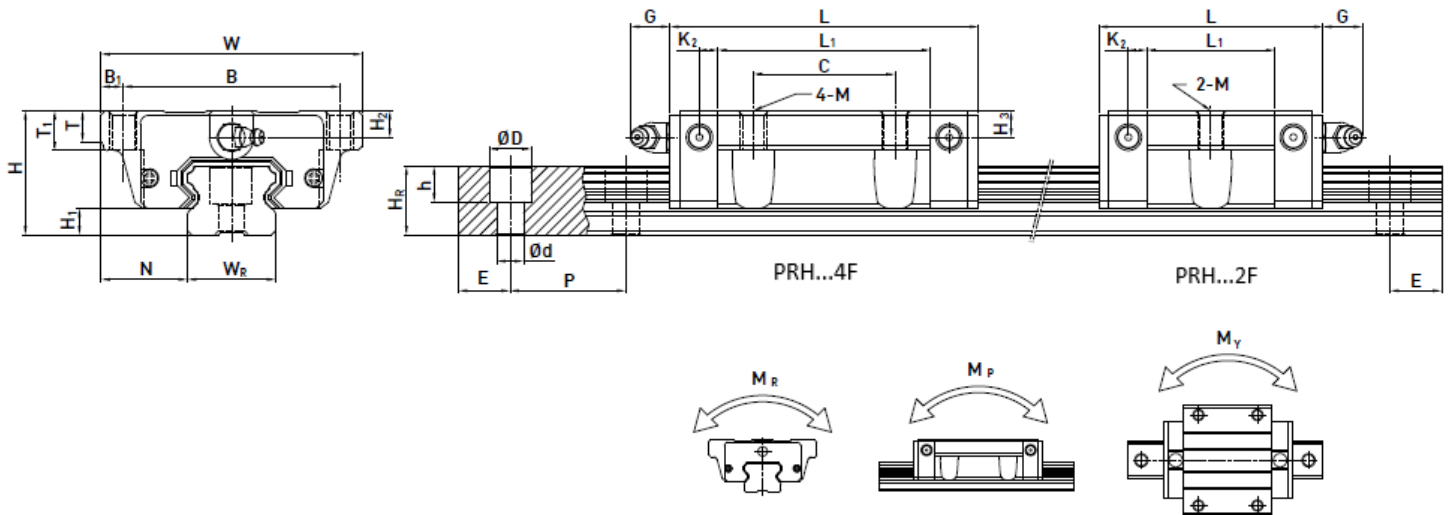
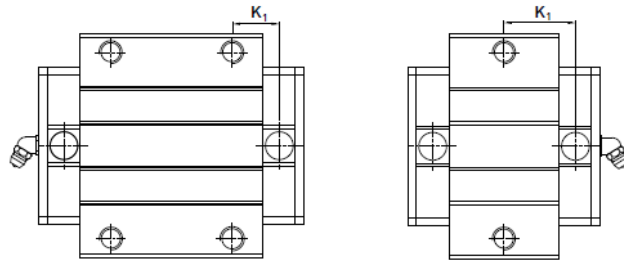
Kgf C : Capacidade Carga Dinâmica

Kgf CO: Capacidade Carga Estática

EGH..4F: Padrão

PRH..2F: Curto

## PATIM COM ABA – PERFIL BAIXO (PRW)



	H	H <sub>1</sub>	N	W	B	B <sub>1</sub>	C	L <sub>1</sub>	L	K <sub>1</sub>	K <sub>2</sub>	G	M	T	T <sub>1</sub>	H <sub>2</sub>	H <sub>3</sub>	WR	HR	D	h	d	P	E	(mm)	Kgf C	Kgf CO	
PRW15..2F	24	4.5	18.5	52	41	5.5	-	23.1	40.1	14.8	3.5	5.7	M5	5	7	5.5	6	15	12.5	6	4.5	3.5	60	20	M3x16	535	940	
PRW15..4F							26	39.8	56.8	10.15																M3x16	783	1619
PRW20..2F	28	6	19.5	59	49	5	-	29	50	18.75	4.15	12	M6	7	9	6	6	20	15.5	9.5	8.5	6	60	20	M5x16	723	1274	
PRW20..4F							32	48.1	69.1	12.3																M5x16	1031	2113
PRW25..2F	33	7	25	73	60	6.5	-	35.5	59.1	21.9	4.55	12	M8	7.5	10	8	8	23	18	11	9	7	60	20	M6x20	1140	1950	
PRW25..4F							35	59	82.6	16.15																M6x20	1627	3240
PRW30..2F	42	10	31	90	72	9	-	41.5	69.5	26.75	6	12	M10	7	10	8	9	28	23	11	9	7	80	20	M6x25	1642	2810	
PRW30..4F							40	70.1	98.1	21.05																M6x25	2370	4746
PRW35..2F	48	11	33	100	82	9	-	45	75	28.5	7	12	M10	10	13	8.5	8.5	34	27.5	14	12	9	80	20	M8x25	2266	3738	
PRW35..4F							50	78	108	20																M8x25	3335	6484

(mm): Parafuso Trilho

Kgf C : Capacidade Carga Dinâmica

Kgf CO: Capacidade Carga Estática

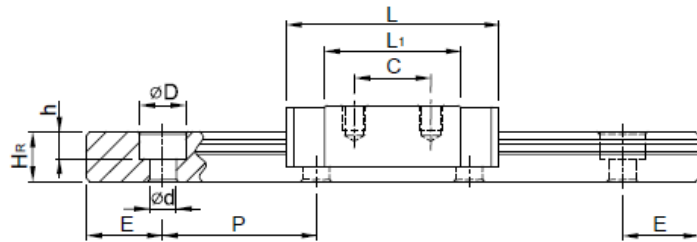
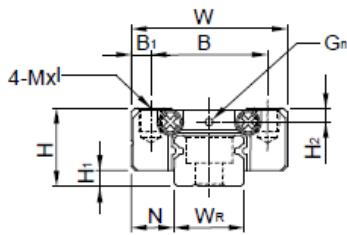
PRW..4F: Padrão

PRW..2F: Curto

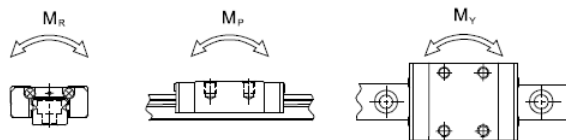
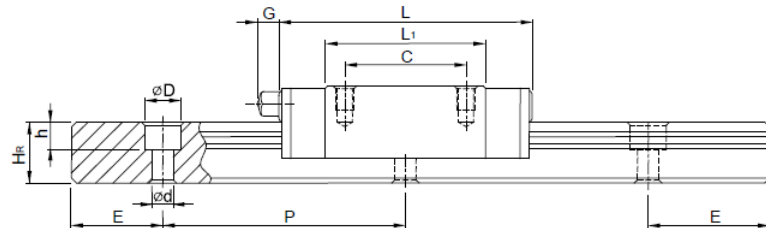
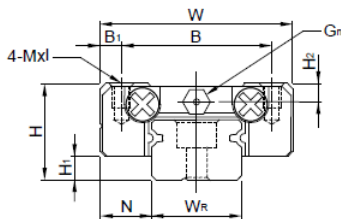
## Série Mini - PMH



### PMH7, PMH9, PMH12



### PMH15



	H	H1	N	W	B	B1	C	L1	L	G	GN	Mxl	H2	WR	HR	D	h	d	P	E	(mm)	Kgf C	Kgf CO
PMH 7C	8	1.5	5	17	12	2.5	8	13.5	22.5	-	∅1.2	M2x2.5	1.5	7	4.8	4.2	2.3	2.4	15	5	M2x6	98	124
PMH 7A	8	1.5	5	17	12	2.5	13	21.8	30.8	-	∅1.2	M2x2.5	1.5	7	4.8	4.2	2.3	2.4	15	5	M2x6	137	196
PMH 9C	10	2	5.5	20	15	2.5	10	18.9	28.9	-	∅1.4	M3x3	1.8	9	6.5	6	3.5	3.5	20	7.5	M3x8	186	255
PMH 9A	10	2	5.5	20	15	2.5	16	29.9	39.9	-	∅1.4	M3x3	1.8	9	6.5	6	3.5	3.5	20	7.5	M3x8	255	402
PMH 12C	13	3	7.5	27	20	3.5	15	21.7	34.7	-	∅2	M3x3.5	2.5	12	8	6	4.5	3.5	25	10	M3x8	284	392
PMH 12A	13	3	7.5	27	20	3.5	20	32.4	45.4	-	∅2	M3x3.5	2.5	12	8	6	4.5	3.5	25	10	M3x8	372	588
PMH 15C	16	4	8.5	32	25	3.5	20	26.7	42.1	4.5	M3	M3x4	3	15	10	6	4.5	3.5	40	15	M3x10	461	559
PMH 15A	16	4	8.5	32	25	3.5	25	43.4	58.8	4.5	M3	M3x4	3	15	10	6	4.5	3.5	40	15	M3x10	637	911

PMH..C: Patim tamanho normal      PMH..A: Patim tamanho alongado      (mm): Parafuso Trilho

Kgf C: Capacidade Carga Dinâmica      Kgf CO: Capacidade Carga Estática