



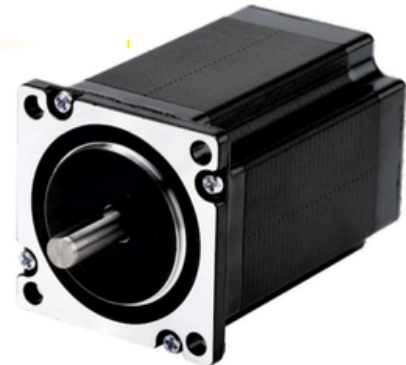
PRADO

AUTOMAÇÃO INDUSTRIAL

57/60 series two-phase stepping motor

General specifications

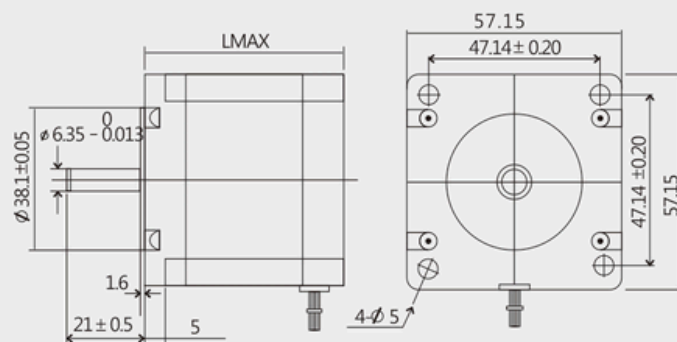
Step accuracy	±5% (Whole step, Empty load)
Temperature rise	80 °C Max
Ambient temperature	-10 °C — +50 °C
Insulation resistance	100MΩmin. 500VDC
Pressure resistance	500VAC for one minute
Radial runout	0.06 Max. (450g-load)
Axial runout	0.08 Max. (450g-load)



Technical specifications

Model	Phase	Step angle (°)	Holding torque N.M	Rated current A	Phase inductance mH	Phase resistance Ohm	Number of leads	Rotor inertia (g.cm ²)	Shaft diameter mm	Motor weight Kg	Body length L(mm)
57BG55	2	1.8	1.2	3.0	1.2	0.8	4	260	6.35	0.6	55
57BG76	2	1.8	2.0	4.0	2.1	1.0	4	460	8	1.0	76
57BG80	2	1.8	2.2	5.0	1.8	0.8	4	460	8	1.1	80
57BG100	2	1.8	3.0	5.0	3.2	0.78	4	720	8	1.4	100
60BG56	2	1.8	1.5	4.0	1.1	0.44	4	340	8	0.8	56
60BG86	2	1.8	3.0	5.0	2.62	0.75	4	690	8	1.3	86

Dimensions



*The above is only the representative product 57BG80 motor shaft diameter is 8mm, with a platform.
When the brake is required to be added, the motor length will increase by 40 mm.

Lead connection

connection	Driver wiring	Corresponding motor leads	Applications
Tandem	A+	A	Low speed
	A-	C	
	B+	B	
	B-	D	
	Vacant	AC connect	
in parallel	Vacant	BD connect	high speed
	A+	AC	
	A-	AC	
	B+	BD	
	B-	BD	

Wiring diagram

